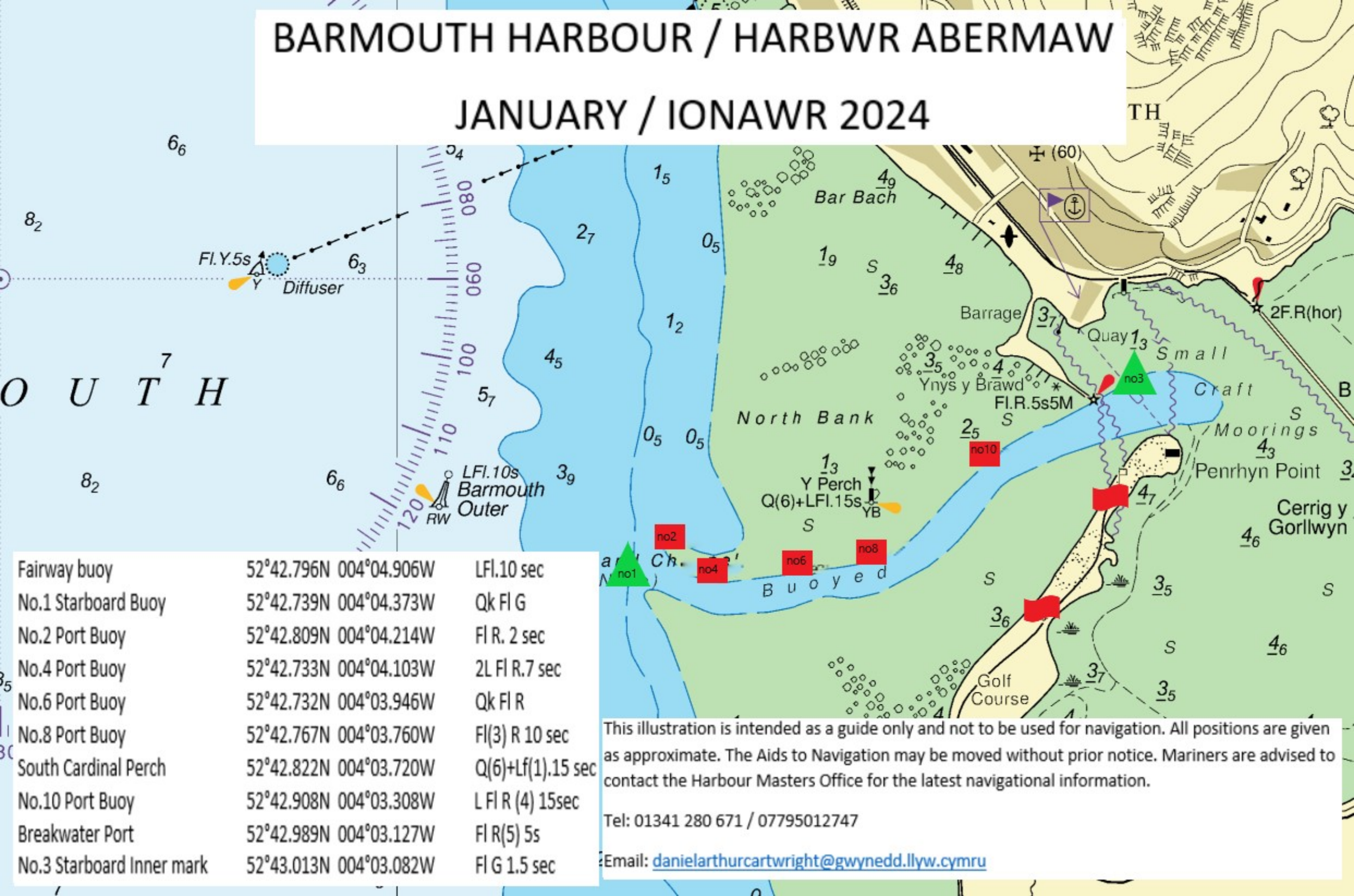


BARMOUTH HARBOUR / HARBWR ABERMAW

JANUARY / IONAWR 2024



Fairway buoy	52°42.796N 004°04.906W	LFI.10 sec
No.1 Starboard Buoy	52°42.739N 004°04.373W	Qk FI G
No.2 Port Buoy	52°42.809N 004°04.214W	FI R. 2 sec
No.4 Port Buoy	52°42.733N 004°04.103W	2L FI R.7 sec
No.6 Port Buoy	52°42.732N 004°03.946W	Qk FI R
No.8 Port Buoy	52°42.767N 004°03.760W	FI(3) R 10 sec
South Cardinal Perch	52°42.822N 004°03.720W	Q(6)+Lf(1).15 sec
No.10 Port Buoy	52°42.908N 004°03.308W	L FI R (4) 15sec
Breakwater Port	52°42.989N 004°03.127W	FI R(5) 5s
No.3 Starboard Inner mark	52°43.013N 004°03.082W	FI G 1.5 sec

This illustration is intended as a guide only and not to be used for navigation. All positions are given as approximate. The Aids to Navigation may be moved without prior notice. Mariners are advised to contact the Harbour Masters Office for the latest navigational information.

Tel: 01341 280 671 / 07795012747

Email: danielarthurcartwright@gwynedd.llyw.cymru